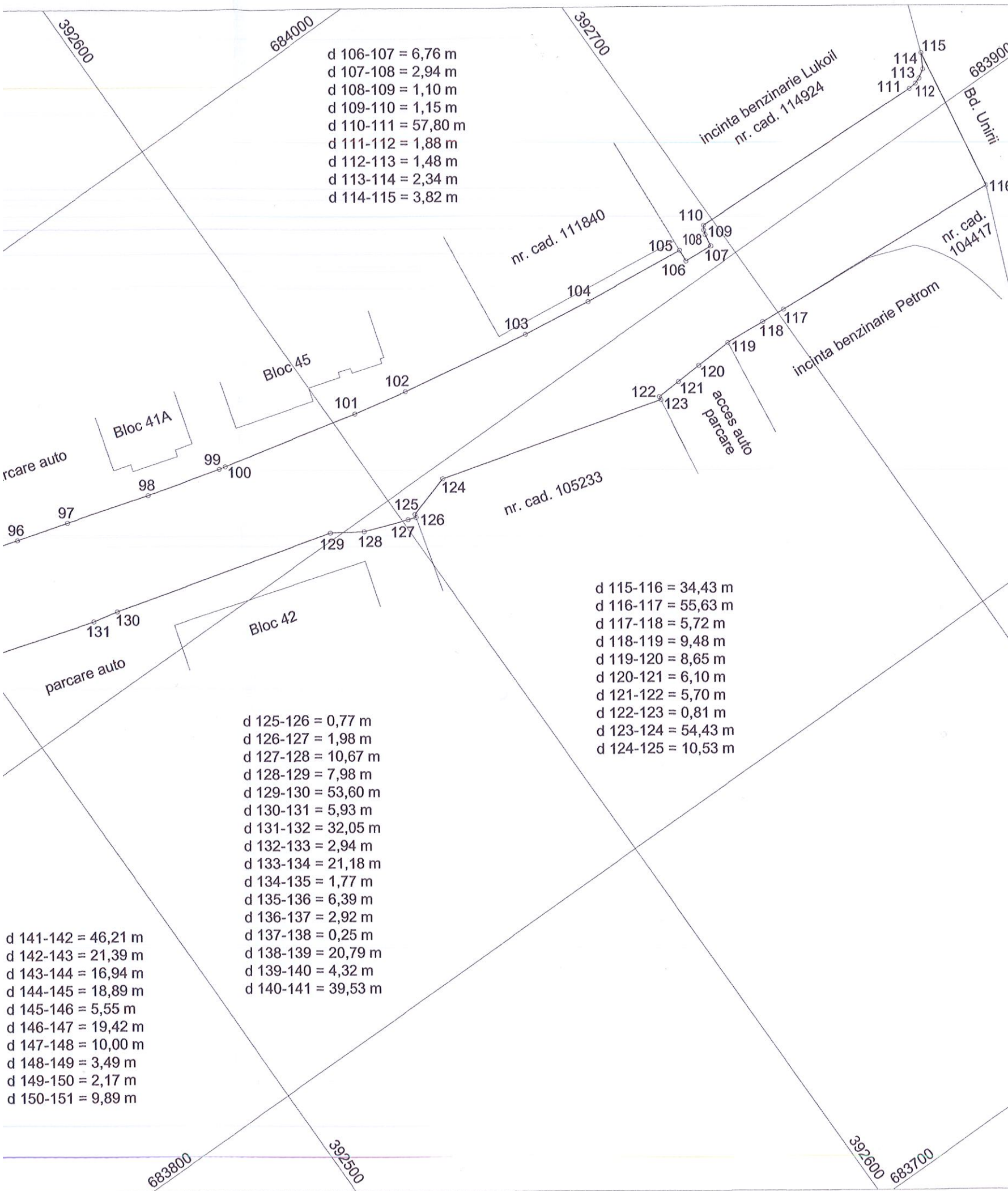


Nr. cadastral	Suprafata masurata, [mp]	Adresa imobilului
	27052	Mun. Baia Mare, bd. Republicii, jud. Maramures
Nr. Cartea Funciara	Unitatea Administrativ Teritoriala (UAT)	
	BAIA MARE	



d 106-107 = 6,76 m  
d 107-108 = 2,94 m  
d 108-109 = 1,10 m  
d 109-110 = 1,15 m  
d 110-111 = 57,80 m  
d 111-112 = 1,88 m  
d 112-113 = 1,48 m  
d 113-114 = 2,34 m  
d 114-115 = 3,82 m

d 115-116 = 34,43 m  
d 116-117 = 55,63 m  
d 117-118 = 5,72 m  
d 118-119 = 9,48 m  
d 119-120 = 8,65 m  
d 120-121 = 6,10 m  
d 121-122 = 5,70 m  
d 122-123 = 0,81 m  
d 123-124 = 54,43 m  
d 124-125 = 10,53 m

d 125-126 = 0,77 m  
d 126-127 = 1,98 m  
d 127-128 = 10,67 m  
d 128-129 = 7,98 m  
d 129-130 = 53,60 m  
d 130-131 = 5,93 m  
d 131-132 = 32,05 m  
d 132-133 = 2,94 m  
d 133-134 = 21,18 m  
d 134-135 = 1,77 m  
d 135-136 = 6,39 m  
d 136-137 = 2,92 m  
d 137-138 = 0,25 m  
d 138-139 = 20,79 m  
d 139-140 = 4,32 m  
d 140-141 = 39,53 m

d 141-142 = 46,21 m  
d 142-143 = 21,39 m  
d 143-144 = 16,94 m  
d 144-145 = 18,89 m  
d 145-146 = 5,55 m  
d 146-147 = 19,42 m  
d 147-148 = 10,00 m  
d 148-149 = 3,49 m  
d 149-150 = 2,17 m  
d 150-151 = 9,89 m

A. Date referitoare la teren			
Nr. parcela	Categorie de folosinta	Suprafata [mp]	Mentiuni
1	DR	27052	Intravilan.
TOTAL		27052	Bulevardul Republicii, tronson 3.
B. Date referitoare la constructii			
Cod constructie	Destinatia	Supraf. constr. la sol, [mp]	Mentiuni
-	-	-	-
TOTAL		-	-
Suprafata totala masurata a imobilului = 27052 mp Suprafata din act = 27052 mp			
Executant ..... S.C. TOPO EXPERT S.R.L. ing. Ardelean Vasile Alexandru		Inspector	
Confirm executarea masuratorilor la teren, corectitudinea intocmirii documentatiei cadastrale si corespondenta acesteia cu realitatea din teren		Confirm introducerea imobilului in baza de date integrata si atribuirea numarului cadastral	
Semnatura si stampila		Semnatura si parafa	
		Stampila BCPI	
		Data: 22.02.2018	

5-46 = 0,66 m  
 6-47 = 5,64 m  
 7-48 = 1,28 m  
 8-49 = 6,06 m  
 9-50 = 0,42 m  
 0-51 = 0,35 m  
 1-52 = 3,32 m  
 2-53 = 7,72 m  
 3-54 = 14,58 m  
 4-55 = 6,55 m  
 5-56 = 12,23 m  
 6-57 = 0,70 m  
 7-58 = 4,06 m  
 8-59 = 0,40 m  
 9-60 = 7,90 m  
 0-61 = 5,36 m  
 1-62 = 7,16 m  
 2-63 = 2,21 m

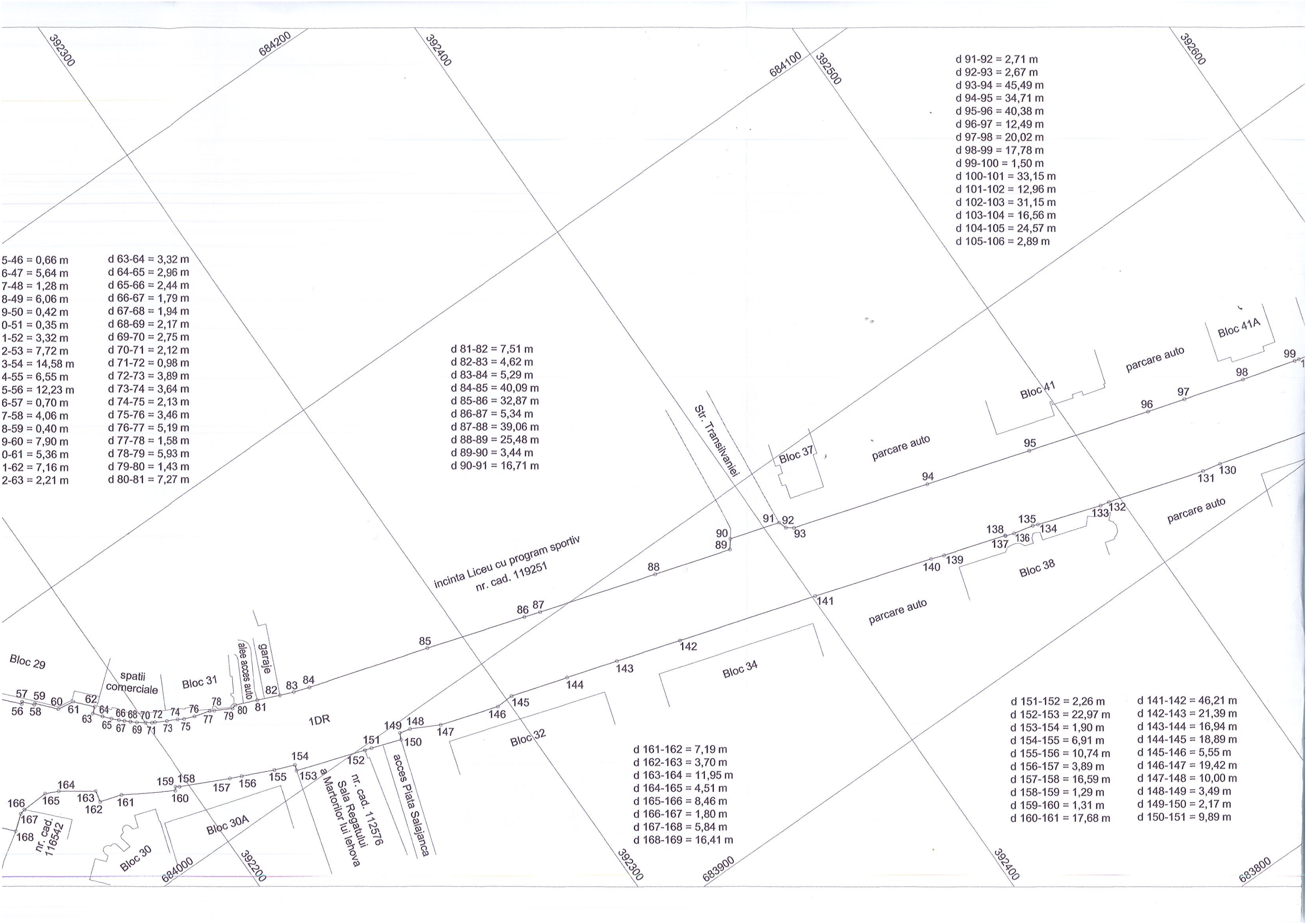
d 91-92 = 2,71 m  
 d 92-93 = 2,67 m  
 d 93-94 = 45,49 m  
 d 94-95 = 34,71 m  
 d 95-96 = 40,38 m  
 d 96-97 = 12,49 m  
 d 97-98 = 20,02 m  
 d 98-99 = 17,78 m  
 d 99-100 = 1,50 m  
 d 100-101 = 33,15 m  
 d 101-102 = 12,96 m  
 d 102-103 = 31,15 m  
 d 103-104 = 16,56 m  
 d 104-105 = 24,57 m  
 d 105-106 = 2,89 m

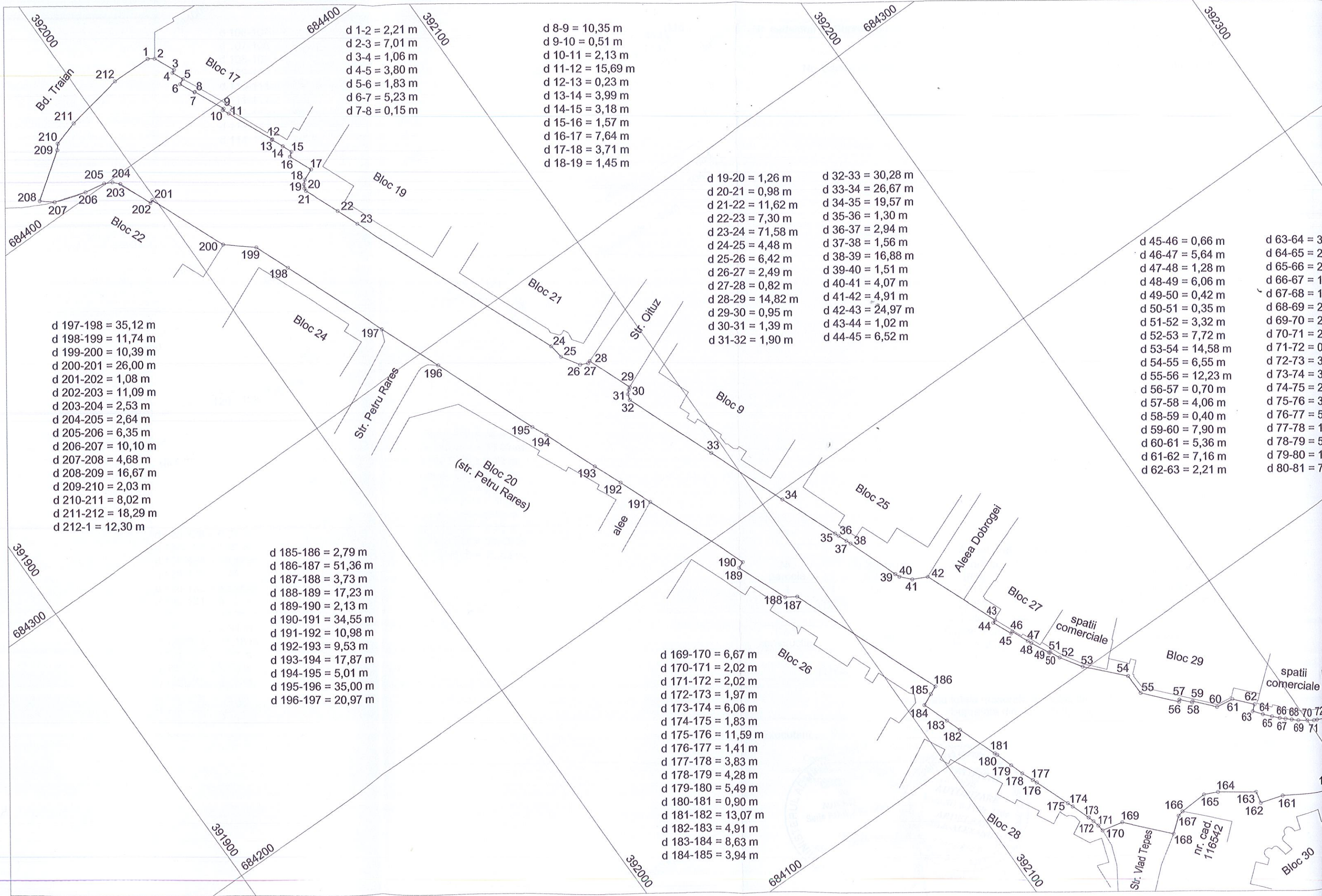
d 81-82 = 7,51 m  
 d 82-83 = 4,62 m  
 d 83-84 = 5,29 m  
 d 84-85 = 40,09 m  
 d 85-86 = 32,87 m  
 d 86-87 = 5,34 m  
 d 87-88 = 39,06 m  
 d 88-89 = 25,48 m  
 d 89-90 = 3,44 m  
 d 90-91 = 16,71 m

d 151-152 = 2,26 m  
 d 152-153 = 22,97 m  
 d 153-154 = 1,90 m  
 d 154-155 = 6,91 m  
 d 155-156 = 10,74 m  
 d 156-157 = 3,89 m  
 d 157-158 = 16,59 m  
 d 158-159 = 1,29 m  
 d 159-160 = 1,31 m  
 d 160-161 = 17,68 m

d 141-142 = 46,21 m  
 d 142-143 = 21,39 m  
 d 143-144 = 16,94 m  
 d 144-145 = 18,89 m  
 d 145-146 = 5,55 m  
 d 146-147 = 19,42 m  
 d 147-148 = 10,00 m  
 d 148-149 = 3,49 m  
 d 149-150 = 2,17 m  
 d 150-151 = 9,89 m

d 161-162 = 7,19 m  
 d 162-163 = 3,70 m  
 d 163-164 = 11,95 m  
 d 164-165 = 4,51 m  
 d 165-166 = 8,46 m  
 d 166-167 = 1,80 m  
 d 167-168 = 5,84 m  
 d 168-169 = 16,41 m





d 1-2 = 2,21 m  
d 2-3 = 7,01 m  
d 3-4 = 1,06 m  
d 4-5 = 3,80 m  
d 5-6 = 1,83 m  
d 6-7 = 5,23 m  
d 7-8 = 0,15 m

d 8-9 = 10,35 m  
d 9-10 = 0,51 m  
d 10-11 = 2,13 m  
d 11-12 = 15,69 m  
d 12-13 = 0,23 m  
d 13-14 = 3,99 m  
d 14-15 = 3,18 m  
d 15-16 = 1,57 m  
d 16-17 = 7,64 m  
d 17-18 = 3,71 m  
d 18-19 = 1,45 m

d 19-20 = 1,26 m  
d 20-21 = 0,98 m  
d 21-22 = 11,62 m  
d 22-23 = 7,30 m  
d 23-24 = 71,58 m  
d 24-25 = 4,48 m  
d 25-26 = 6,42 m  
d 26-27 = 2,49 m  
d 27-28 = 0,82 m  
d 28-29 = 14,82 m  
d 29-30 = 0,95 m  
d 30-31 = 1,39 m  
d 31-32 = 1,90 m

d 32-33 = 30,28 m  
d 33-34 = 26,67 m  
d 34-35 = 19,57 m  
d 35-36 = 1,30 m  
d 36-37 = 2,94 m  
d 37-38 = 1,56 m  
d 38-39 = 16,88 m  
d 39-40 = 1,51 m  
d 40-41 = 4,07 m  
d 41-42 = 4,91 m  
d 42-43 = 24,97 m  
d 43-44 = 1,02 m  
d 44-45 = 6,52 m

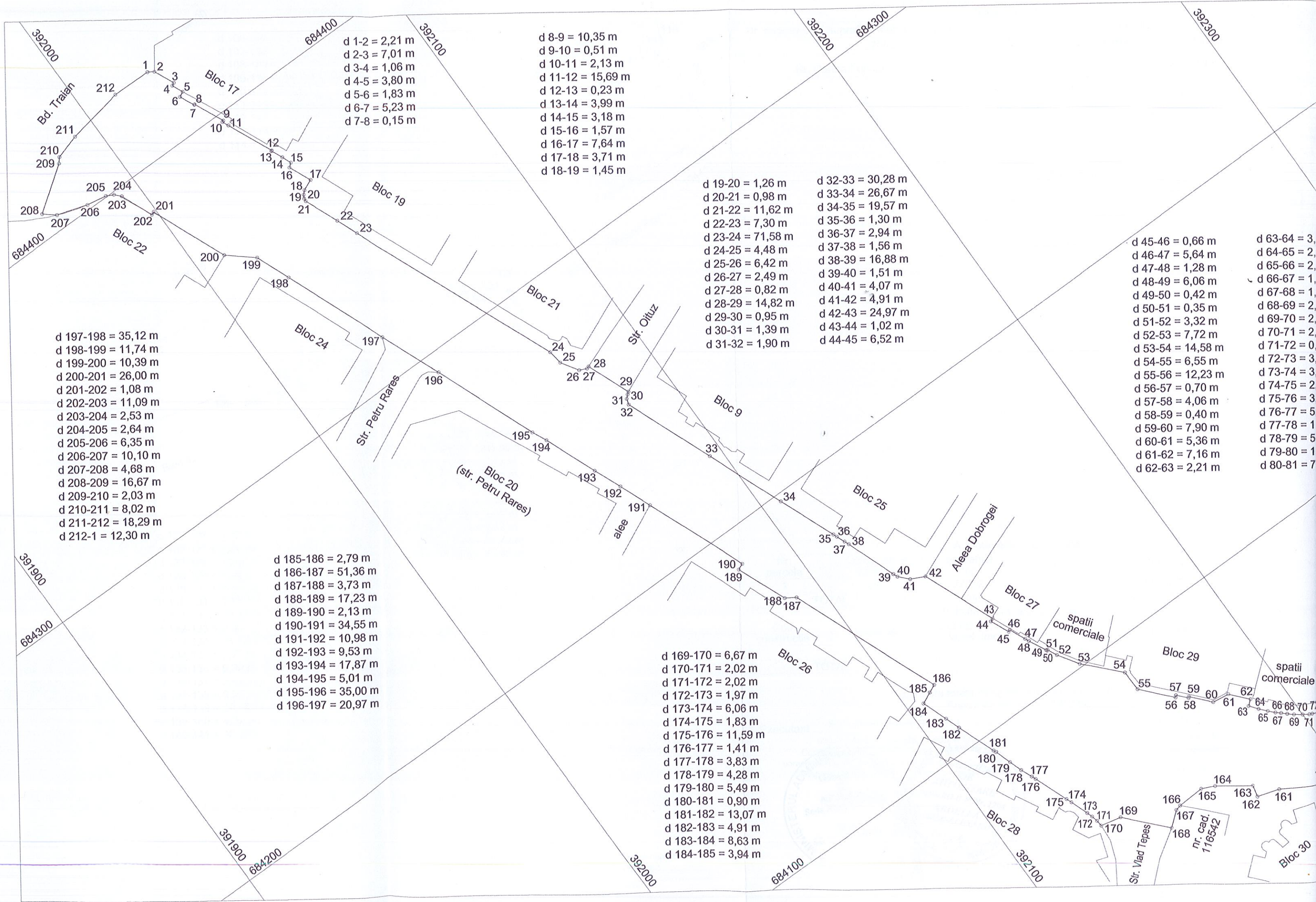
d 45-46 = 0,66 m  
d 46-47 = 5,64 m  
d 47-48 = 1,28 m  
d 48-49 = 6,06 m  
d 49-50 = 0,42 m  
d 50-51 = 0,35 m  
d 51-52 = 3,32 m  
d 52-53 = 7,72 m  
d 53-54 = 14,58 m  
d 54-55 = 6,55 m  
d 55-56 = 12,23 m  
d 56-57 = 0,70 m  
d 57-58 = 4,06 m  
d 58-59 = 0,40 m  
d 59-60 = 7,90 m  
d 60-61 = 5,36 m  
d 61-62 = 7,16 m  
d 62-63 = 2,21 m

d 63-64 = 3,00 m  
d 64-65 = 2,00 m  
d 65-66 = 2,00 m  
d 66-67 = 1,00 m  
d 67-68 = 1,00 m  
d 68-69 = 2,00 m  
d 69-70 = 2,00 m  
d 70-71 = 2,00 m  
d 71-72 = 0,00 m  
d 72-73 = 3,00 m  
d 73-74 = 3,00 m  
d 74-75 = 2,00 m  
d 75-76 = 3,00 m  
d 76-77 = 5,00 m  
d 77-78 = 1,00 m  
d 78-79 = 5,00 m  
d 79-80 = 1,00 m  
d 80-81 = 7,00 m

d 197-198 = 35,12 m  
d 198-199 = 11,74 m  
d 199-200 = 10,39 m  
d 200-201 = 26,00 m  
d 201-202 = 1,08 m  
d 202-203 = 11,09 m  
d 203-204 = 2,53 m  
d 204-205 = 2,64 m  
d 205-206 = 6,35 m  
d 206-207 = 10,10 m  
d 207-208 = 4,68 m  
d 208-209 = 16,67 m  
d 209-210 = 2,03 m  
d 210-211 = 8,02 m  
d 211-212 = 18,29 m  
d 212-1 = 12,30 m

d 185-186 = 2,79 m  
d 186-187 = 51,36 m  
d 187-188 = 3,73 m  
d 188-189 = 17,23 m  
d 189-190 = 2,13 m  
d 190-191 = 34,55 m  
d 191-192 = 10,98 m  
d 192-193 = 9,53 m  
d 193-194 = 17,87 m  
d 194-195 = 5,01 m  
d 195-196 = 35,00 m  
d 196-197 = 20,97 m

d 169-170 = 6,67 m  
d 170-171 = 2,02 m  
d 171-172 = 2,02 m  
d 172-173 = 1,97 m  
d 173-174 = 6,06 m  
d 174-175 = 1,83 m  
d 175-176 = 11,59 m  
d 176-177 = 1,41 m  
d 177-178 = 3,83 m  
d 178-179 = 4,28 m  
d 179-180 = 5,49 m  
d 180-181 = 0,90 m  
d 181-182 = 13,07 m  
d 182-183 = 4,91 m  
d 183-184 = 8,63 m  
d 184-185 = 3,94 m



d 1-2 = 2,21 m  
 d 2-3 = 7,01 m  
 d 3-4 = 1,06 m  
 d 4-5 = 3,80 m  
 d 5-6 = 1,83 m  
 d 6-7 = 5,23 m  
 d 7-8 = 0,15 m

d 8-9 = 10,35 m  
 d 9-10 = 0,51 m  
 d 10-11 = 2,13 m  
 d 11-12 = 15,69 m  
 d 12-13 = 0,23 m  
 d 13-14 = 3,99 m  
 d 14-15 = 3,18 m  
 d 15-16 = 1,57 m  
 d 16-17 = 7,64 m  
 d 17-18 = 3,71 m  
 d 18-19 = 1,45 m

d 19-20 = 1,26 m  
 d 20-21 = 0,98 m  
 d 21-22 = 11,62 m  
 d 22-23 = 7,30 m  
 d 23-24 = 71,58 m  
 d 24-25 = 4,48 m  
 d 25-26 = 6,42 m  
 d 26-27 = 2,49 m  
 d 27-28 = 0,82 m  
 d 28-29 = 14,82 m  
 d 29-30 = 0,95 m  
 d 30-31 = 1,39 m  
 d 31-32 = 1,90 m

d 32-33 = 30,28 m  
 d 33-34 = 26,67 m  
 d 34-35 = 19,57 m  
 d 35-36 = 1,30 m  
 d 36-37 = 2,94 m  
 d 37-38 = 1,56 m  
 d 38-39 = 16,88 m  
 d 39-40 = 1,51 m  
 d 40-41 = 4,07 m  
 d 41-42 = 4,91 m  
 d 42-43 = 24,97 m  
 d 43-44 = 1,02 m  
 d 44-45 = 6,52 m

d 45-46 = 0,66 m  
 d 46-47 = 5,64 m  
 d 47-48 = 1,28 m  
 d 48-49 = 6,06 m  
 d 49-50 = 0,42 m  
 d 50-51 = 0,35 m  
 d 51-52 = 3,32 m  
 d 52-53 = 7,72 m  
 d 53-54 = 14,58 m  
 d 54-55 = 6,55 m  
 d 55-56 = 12,23 m  
 d 56-57 = 0,70 m  
 d 57-58 = 4,06 m  
 d 58-59 = 0,40 m  
 d 59-60 = 7,90 m  
 d 60-61 = 5,36 m  
 d 61-62 = 7,16 m  
 d 62-63 = 2,21 m

d 63-64 = 3,00 m  
 d 64-65 = 2,00 m  
 d 65-66 = 2,00 m  
 d 66-67 = 1,00 m  
 d 67-68 = 1,00 m  
 d 68-69 = 2,00 m  
 d 69-70 = 2,00 m  
 d 70-71 = 2,00 m  
 d 71-72 = 0,00 m  
 d 72-73 = 3,00 m  
 d 73-74 = 3,00 m  
 d 74-75 = 2,00 m  
 d 75-76 = 3,00 m  
 d 76-77 = 5,00 m  
 d 77-78 = 1,00 m  
 d 78-79 = 5,00 m  
 d 79-80 = 1,00 m  
 d 80-81 = 7,00 m

d 197-198 = 35,12 m  
 d 198-199 = 11,74 m  
 d 199-200 = 10,39 m  
 d 200-201 = 26,00 m  
 d 201-202 = 1,08 m  
 d 202-203 = 11,09 m  
 d 203-204 = 2,53 m  
 d 204-205 = 2,64 m  
 d 205-206 = 6,35 m  
 d 206-207 = 10,10 m  
 d 207-208 = 4,68 m  
 d 208-209 = 16,67 m  
 d 209-210 = 2,03 m  
 d 210-211 = 8,02 m  
 d 211-212 = 18,29 m  
 d 212-1 = 12,30 m

d 185-186 = 2,79 m  
 d 186-187 = 51,36 m  
 d 187-188 = 3,73 m  
 d 188-189 = 17,23 m  
 d 189-190 = 2,13 m  
 d 190-191 = 34,55 m  
 d 191-192 = 10,98 m  
 d 192-193 = 9,53 m  
 d 193-194 = 17,87 m  
 d 194-195 = 5,01 m  
 d 195-196 = 35,00 m  
 d 196-197 = 20,97 m

d 169-170 = 6,67 m  
 d 170-171 = 2,02 m  
 d 171-172 = 2,02 m  
 d 172-173 = 1,97 m  
 d 173-174 = 6,06 m  
 d 174-175 = 1,83 m  
 d 175-176 = 11,59 m  
 d 176-177 = 1,41 m  
 d 177-178 = 3,83 m  
 d 178-179 = 4,28 m  
 d 179-180 = 5,49 m  
 d 180-181 = 0,90 m  
 d 181-182 = 13,07 m  
 d 182-183 = 4,91 m  
 d 183-184 = 8,63 m  
 d 184-185 = 3,94 m

nr. cad.  
 116542